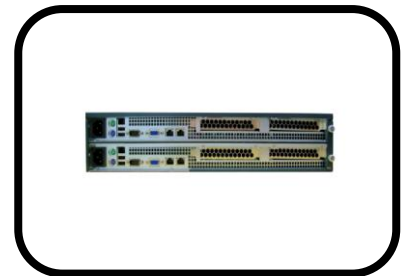




## Twin Server 2U02NENV



Available Colors  
Pantone 8504C

### Features & Benefits

- Modular configurations to optimize performance
- Support High-Availability system solution
- Up to 4 Intel® Xeon® processor , each CPU with up to 6 cores
- Support four PCIe 2.0 standard cards
- Integrated IPMI 2.0 with dedicated LAN
- High efficiency 400W (1+1) redundant PSU
- Up to 384GB DDR3 ECC registered DIMM
- Anti- Vibration Fan and HDDs

<http://www.inistor.com/product.php?ref=3&ctg=225&sno=1916>

## SPECIFICATIONS

Physical Architecture	
Enclosure Form Factor	2RU, 19" Rackmount Chassis
Chassis Dimension	28.5" (D) × 17.2" (W) × 3.5" (H)
System Architecture	
Mother Board	2x DP Xeon® Server Motherboards (1 for each node)
Processor	4x 1366-pin LGA Socket (2 for each node) Support Intel® Xeon® Processors 5500/5600 Series
QPI	Up to 6.4 GT/s
Chipset	Dual Intel® 5520 (Tylersburg) Chipsets Intel® I/O Controller Hub ICH10R + 2x IOH-36D
System Memory	Up to 24x DDR3 DIMM Sockets (12 for each node) Support for 800/1066/1333 MHz DIMM Supports up to 384 GB 1333 / 1066 / 800MHz DDR3 ECC Registered Memory Supports up to 196 GB 1333 / 1066 / 800MHz DDR3 ECC / Non ECC Unbuffered Memory
Drive Bay	
Hard Disk Drive	4x Fixed Anti-Vibration HDD Bracket Supports up to 4x 3.5" SATA/SAS HDD (2 for each node) Enterprise SATA HDD only Recommended
SAS	Support 6Gb/s SAS Interface
SATA	Support 3Gb/s SATA Interface
Storage Features	
Storage	mini SAS port via LSI 6Gbps SAS 2008 SATA 3Gbps Ports via Intel ICH10R with Intel® Embedded Server RAID Technology
RAID Level	SAS: RAID 0, 1, 10 support, RAID 5 support (optional) SATA: RAID 0, 1, 5, 10 support (Windows), RAID 0, 1, 10 support (Linux)
Front Panel	
Front Control Panel	2x System Power Button 2x System Reset Button
Indicator	2x Power Status LED 2x Fan Failed LED

Rear Panel	
Expansion Slot	4x Standard PCIe 8x Gen 2 Slot (2 for each node)
I/O Port	2x External DB-9 Serial Port
	4x RJ-45 LAN Ports (stacked)
	2x RJ-45 Management LAN Port
	4x USB 2.0 Port
	2x VGA Port
	4x PS/2 Keyboard and Mouse Port
System Cooling	
System Fan Module	12x 4-Pin PWM Cooler Fan (6 for each node)
Power Configurations	
Electrical / Requirements	2x High-efficiency 400w (1+1) Redundant Power Supply (1 for each node) W/ PFC, AC 100 ~ 240V Full Range, 50Hz ~ 60Hz
Management	
System Configurations	IPMI 2.0 with virtual media over LAN and KVM-over-LAN support
Environmental	
Temperature Range	Operating: 10°C~40°C (50°F~104°F)
	Non-operating: -40°C~70°C (-40°F~158°F)
Humidity Range	Operating: 8%~90% Non-condensing
	Non-operating: 5% ~95% Non-condensing
Shipping Information	
Net Weight	26kg
Gross Weight	32.5kg
Package Dimension	881mm (D) × 591mm (W) × 360mm (H)

---

## Order Code

SKU Number	Description
	1x 2RU, 19" Rackmount Envelope
	1x Front Bezel
	2x 1RU Server (1U02BSR-34567)
2U02NENV-76543	1U02BSR-34567 Integrated System Components
	1x DP Xeon® Server Motherboard
	2x 3.5" Fixed HDD Caddy
	1x 400w (1+1) Redundant Power Supply
	6x Non-Hot Swap Cooling Fans
	2x PCIe Riser Card Kits

---